



Valentine
Ladders & Towers

ESTABLISHED 1959

A member of the ATRICK group

Unit 4K,
Ballymount Cross Industrial Estate
Dublin 24.

Tel: 01-4500 150 / 4500 153

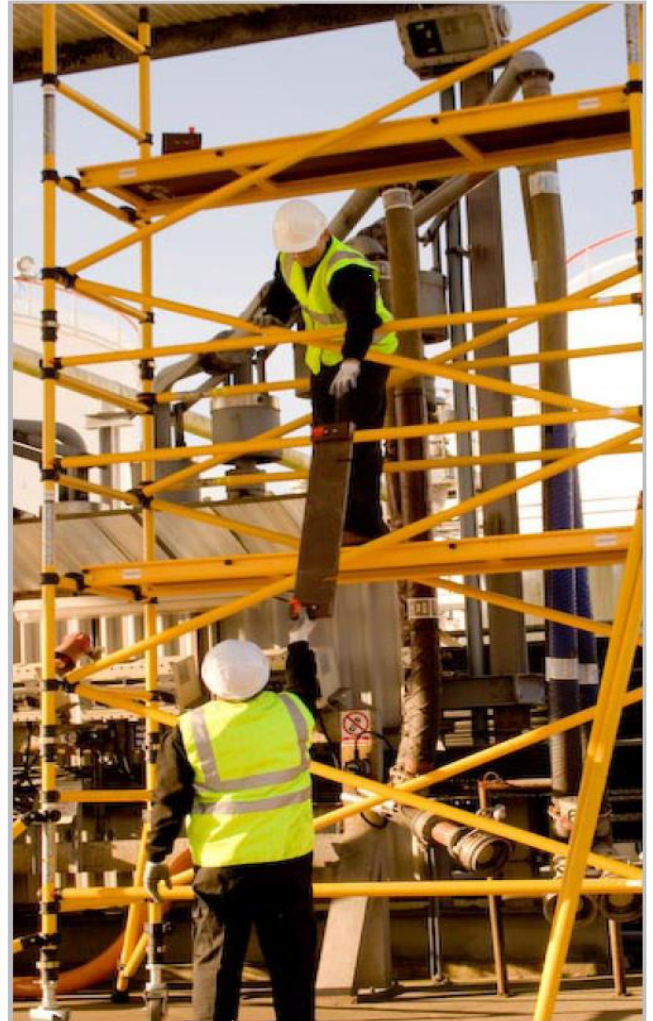
Fax: 01-4500 650

Email: info@valentineladders.ie
www.valentineladders.ie

BoSS Zone 1

The world's premier Glass Reinforced Polymer - GRP (Fibreglass) Industrial modular access tower system.

- » Non conductive/sparking, non corroding, non oxidising
- » Clean & comfortable to handle in cold & warm climates
- » Up to 4 times greater than other GRP tower systems
- » Impact resistant claws
- » Integral ladders with 250mm easy climb rung spacing & 500mm frame rung spacing
- » Ribbed rung tubing for increased grip
- » 3T - Through the Trap build method
- » Two widths - 850mm single & 1450mm double
- » 2 slip resistant platform lengths - 1.8 & 2.5m
- » Maximum platform safe working load of 225kg
- » Primed brace claw mechanism
- » Self cleaning adjustable legs
- » Castors with compact trail/no trail positive locking brakes
- » Deck board edge protection via profile of GRP deck
- » Lift shaft/confined space stabiliser available



Call now or Email